



**JUNIOR  
TACTICIAN**

**TACTICAL  
DECISION  
EXERCISE**

V1.0

# **MOUNTED INTERDICTION**





# MISSION OUTLINE

## MOUNTED INTERDICTION

**Unit:** I33

**Attachments:** 4 x M113; 1 x Military Working Dog with handler

**Detachments:** Nil

**Location:** Refer to map

**Time:** D+3 2215

**Weather:** No wind; overcast; sunrise at 0610

**Situation:** Earlier this evening, local police received information of suspicious activity at 27 King Street, Campbell Town, from a concerned neighbour. The neighbour observed two men carrying duffel bags and dressed in civilian clothes enter the property from the rear entrance, despite the property currently being unleased. On arrival at 2200, the two attending police officers received a burst of machine gun fire from a front window and one officer received a Priority 2 injury. The police report hearing shouts in a foreign language, possibly Musorian.

I33 has been released to assist CIVPOL in responding to this situation. Time is now 2215 and your troops are mounted outside BHQ (Campbell Town District High School) and ready to move. A SITREP from the officers at 2210 reported two figures withdrawing NE from the property on foot.

CIVPOL will coordinate CASEVAC and SECURE the property.

**Mission:** I33 is to INTERDICT suspected MAF SF IOT disrupt MAF reconnaissance in the region.

**Execution:** Cordon and sweep

**Administration & Logistics:** Additional stores include equipment for 2 VCPs.

**Command & Signals:** You are in command of this patrol and your communications back to your Company Commander are good.

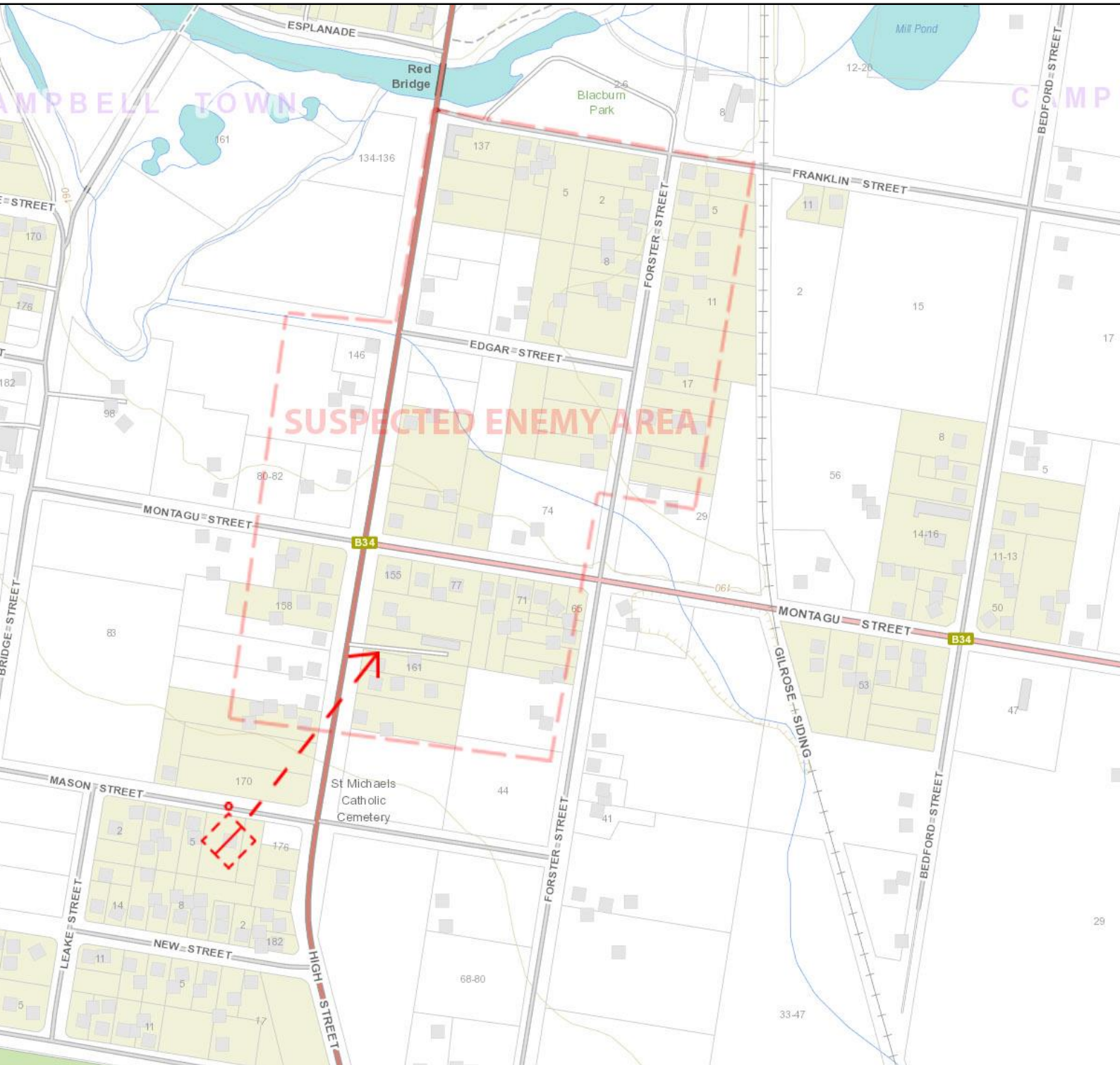


# PLATOON COMMANDER SCENARIO

## MOUNTED INTERDICTION

### TASK

Use the maps below to develop an OP overlay and write a set of orders for this task

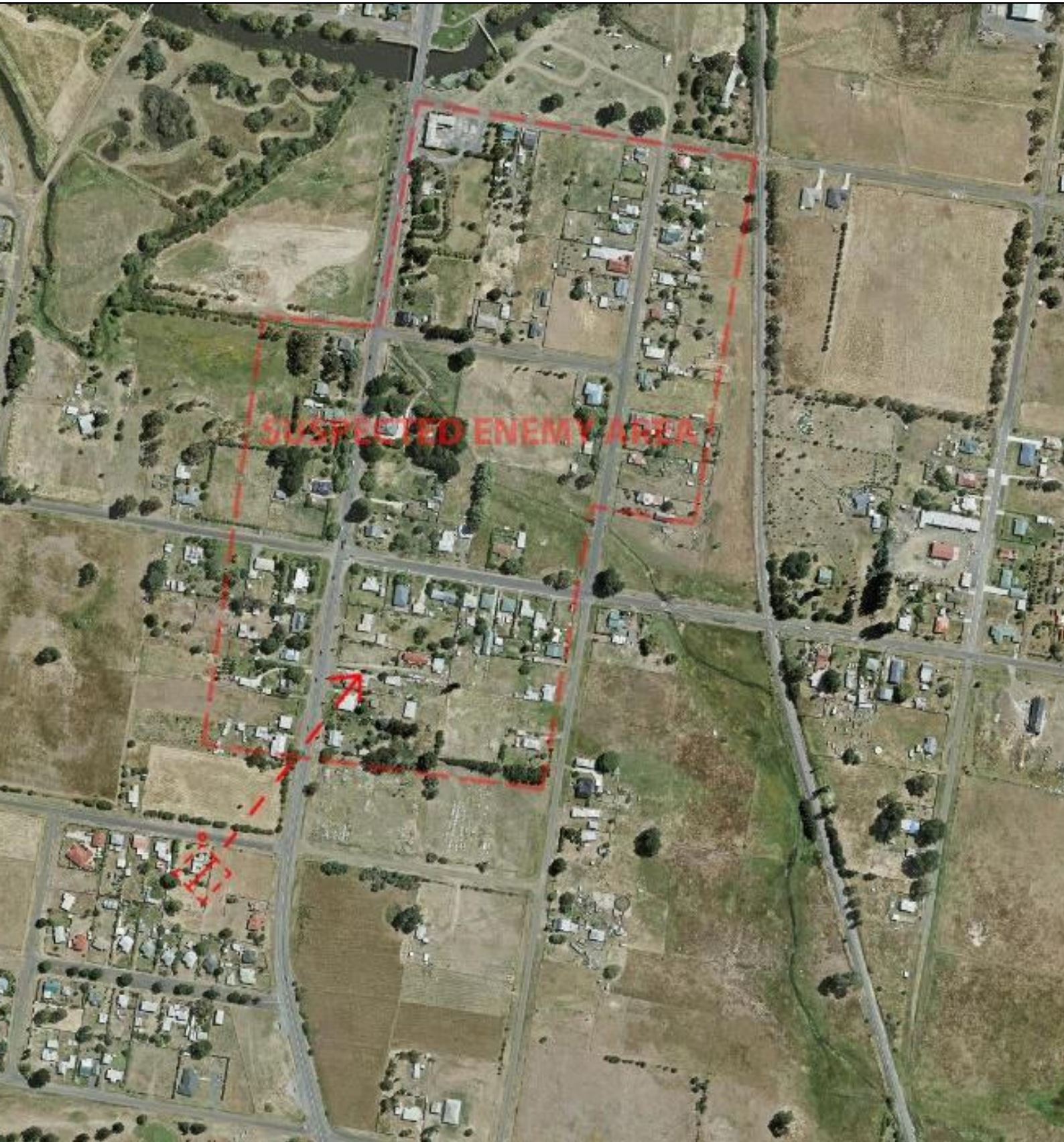






# PLATOON COMMANDER SCENARIO

## MOUNTED INTERDICTION





# PLATOON COMMANDER SCENARIO

## MOUNTED INTERDICTION

**SITUATION**

---

**MISSION**

---

**EXECUTION**

---



# PLATOON COMMANDER SCENARIO

## MOUNTED INTERDICTION

### ADMINISTRATION & LOGISTICS

---

### COMMAND & SIGNALS

---



# SECTION COMMANDER SCENARIO

## MOUNTED INTERDICTION

Your section is patrolling dismounted in the vegetation near Elizabeth River as part of the sweeping force. PTE Jackson, a junior member, sees an unarmed unknown person 150m ahead jump up from behind some bushes and sprint away. PTE Jackson yells a warning: 'Stop there and put your hands above your head! The person continues to run, and in a rush of adrenalin PTE Jackson fires a three round burst. The rounds fail to engage the target and your section loses sight of the person.

### **TASK**

What is your priority of action at this point on the patrol? What actions need to be taken WRT PTE Jackson's breach of LOAC once you conclude your mission?

### **PRIORITIES**

---

### **ACTIONS FOR PTE JACKSON**

---